



MADE IN TAIWAN

MSQ-3300D

2CH Analog Output Adapter

Introduction

The MSQ-3300D 2CH Analog Output Adapter allows Dante audio reception over an IP network. The MSQ-3300D has two channels, featuring high-quality XLR output connectors. Furthermore, the MSQ-3300D can receive uncompressed, low-latency Dante audio signals over a standard IP network. The MSQ-3300D has built-in PoE (Power over Ethernet) and can be powered by any standard PoE network switch.

Features

- Supports two XLR connectors, two-channel output for analog audio
- Supports DHCP & static IP configuration
- Supports sample rates up to 96kHz
- Supports PoE (Power over Ethernet)
- Dante audio over IP and AES67 RTP transport formats
- Excellent dynamic range, SNR and THD performance

Package Contents

- 1x MSQ-3300D
- 1x 5V DC USB Wall Charger
- 1x User Manual

 www.maxsquare.com.tw

 support@maxsquare.com.tw

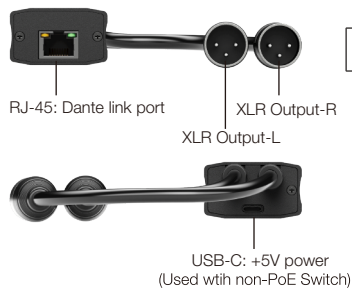
CUSTOMER SERVICE & TECHNICAL SUPPORT support@maxsquare.com.tw

Maxsquare warrants our products for a one year limited warranty. Thank you for choosing us, we appreciate if you tell us your suggestions and leave us a review on Amazon.

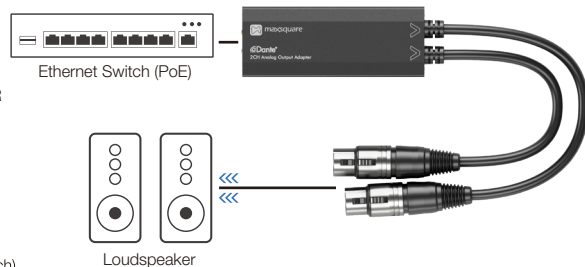
Specifications

Model Name	MSQ-3300D
Sample rates	44.1, 48, 96kHz
Dante device latency	1, 2, or 5ms (configurable using Dante Controller)
Network transport	Dante Audio over IP, AES67 RTP
ESD protection	Human body model — $\pm 15\text{kV}$ [air-gap discharge] & $\pm 8\text{kV}$ [contact discharge]
PCB stack-up	4-layer board [impedance control — differential 100Ω ; single 50Ω]
Input / Output	1x RJ-45 / 2x XLR (Male)
XLR connector	XLR male
RJ-45 connector	WE/SS 8P8C with 2 LED indicators

Panel Descriptions



Connection Diagram



Dante Controller [User Guide] (<https://www.audinate.com/learning/technical-documentation>)

Dante Controller provides users to configure and route audio around Dante networks. Please use it to make connections between Dante devices on your network.

Download the software (<https://www.audinate.com/products/software/dante-controller>)

Browse the download page of the Dante Controller website and create an account to download the software.

Device setup steps

1. Connect the device to Network.
2. Make sure to set up your PC/ Mac and the device in the same domain.
3. Start to use Dante Controller.

Choose A Network Switch (<https://www.getdante.com/support/faq/networks-and-switches>)

Please refer to the link to choose a Network Switch.

The selected network switch must support the following:

- Gigabit ports for inter-switch connections
- Quality of Service (QoS) with 4 queues
- Diffserv (DSCP) QoS, with strict priority
- Managed switch for detailed network link information
- IGMP snooping (routing for Dante AV devices)

Switches incompatible with Dante:

Switches with EEE support may cause poor synchronization and occasional packet loss

Warranty

For more warranty information, please check on our official website: <https://maxsquare.com.tw/warranty/> or contact support@maxsquare.com.tw